

## *Cycling For All Abilities*

### *BikeActive Norfolk's*

#### *Fun Weekend for Cycling Enthusiasts*

*Earsham Village Hall, Earsham, NR35 2TL.*

*Saturday 12th October (10am - 4pm) &*

*Sunday 13th October (10am - 3pm) 2024*

BikeActive Norfolk are staging a fun weekend of events, raising funds to support our charity work, providing a cycling experience, for people of all ages, who through disability, age, infirmity or illness can no longer enjoy the fun and health benefits of cycling.

Centre of the events will be an incredible *'Chasing Le Tour'* memorabilia exhibition. A collection of over **1,200 items from the 1920's to the present day**, built up by Peter Martin, from 28 years following **Le Tour de France**. This really is impressive, and well worth seeing, both for the dedicated cyclist or armchair admirer.



Peter's wife Lisa is a renowned baker, and previous **'Bake Off'** contestant, and a wonderful selection of her **delicious cakes** will be available to purchase on the day.

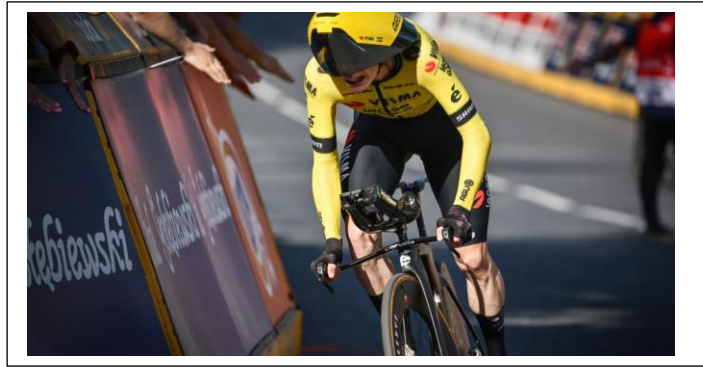


*Donations for the exhibition and £4.00 for tea/coffee & cake.*

*Cycling For All Abilities*

## *Cycling For All Abilities*

In addition, we'll also be hosting a **Roller Racing TT**; so, if you think you've a higher cadence than twice Tour de France winner, Jonas Vingegaard, or can generate more power than World and Olympic sprint champion, Harrie Lavreysen, here's a chance to prove it – perhaps best tackled before your cake!



Ashfield Special Needs will also be displaying a range of their **specialist cycles**, including **Van Raam, Haas and Pfaute**, all designed to keep people with injury, illness or disability cycling.

**BikeActive Norfolk** will have our own specialist cycles present, and will be taking **short rides** out to allow you to see the work we do, as well as encouraging those who haven't cycled for a while, to ride out with us under the auspices of **Cycling UK's Big Bike Revival**.



So do come along and visit us at Earsham, and if planning a ride that weekend, then why not include Earsham on your route, and join us for your coffee and cake stop.

You can also see what work our charity does to help everybody get out cycling by following us on **Facebook** or visiting our website at **BikeActiveNorfolk.org**